



Crack Repair

STEP 1:

DRILL HOLES THROUGH THE CRACK AT A 45° DEEGRE ANGLE EVERY 6 INCHES.



STEP 2:

SCREW IN INJECTOR PLUGS (WITH GREASE NIPPLES TO CONNECT THE HIGH PRESSURE PUMPS).



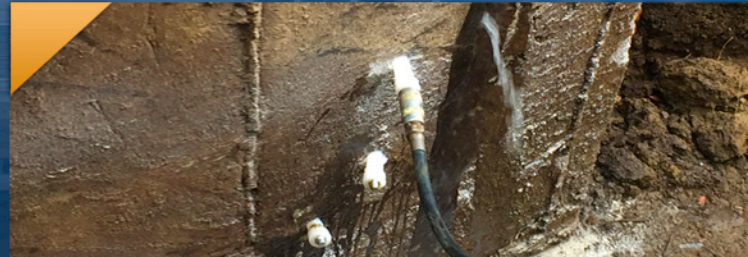
STEP 3:

FLUSH OUT THE CRACK WITH A MILD ACID TO REMOVE DUST, DIRT & DEBRIS FROM ONE INJECTOR TO THE NEXT (REMOVAL OF ANY OBSTRUCTIONS FOR THE INJECTION).



STEP 4:

FLUSH OUT THE CRACK WITH WATER TO CLEAN OUT THE ACID. WATER IS ALSO A REACTOR/ACCELERATOR FOR THE POLYURETHANE.



STEP 5:

COVER THE CRACK WITH HYDRAULIC CEMENT TO PREVENT THE OUTFLOW OF THE POLYURETHANE FROM THE INJECTION.



STEP 6:

INJECT THE POLYURETHANE AT 3000 TO 10000 PSI TO FILL ALL THE OPEN VOIDS IN THE CONCRETE AND TO PUSH THROUGH TO THE OTHER SIDE.

